

飞智冰原狼 2 游戏手柄

Flydigi Direwolf 2 Game Controller

用户手册
User Manual



扫码查看完整版用户手册
扫描下方二维码查看用户手册

Scan QR code to read the user manual
QR 코드를 스캔하시면 사용 설명서를 보실 수 있습니다

飞智空间站 开启更多自定义

通过电脑访问飞智官网 www.flydigi.com 下载「飞智空间站」,可自定义按键、宏、体感、摇杆等功能。

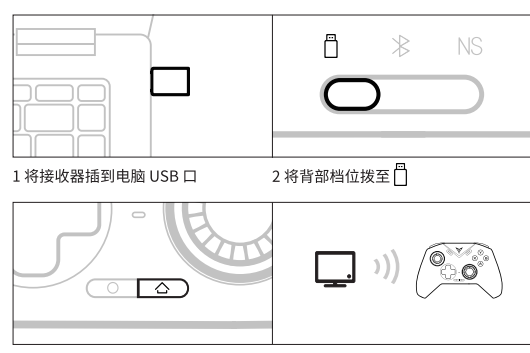
飞智空间站	
<p>按键映射</p> <p>可将按键映射为手柄、键盘按键</p>	<p>宏定义</p> <p>录制摇杆和按键数据,简化繁琐操作</p>
<p>体感映射</p> <p>将体感映射为摇杆/鼠标,射击游戏更精准</p>	<p>摇杆调节</p> <p>设置中心死区和灵敏度曲线</p>

快捷设置连发/宏

冰原狼 2 支持组合键快捷设置连发和宏功能,请扫描首页二维码查看具体设置方法。

连接电脑

无线接收器连接



有线连接

将背部档位拨至 ,通过USB线连接电脑和手柄,指示灯白色常亮表示连接成功

蓝牙连接

将背部档位拨至 ,按 唤醒手柄,在电脑蓝牙里连接 Xbox Wireless Controller

连接 Switch



Switch 模式下按键和键值映射关系如下

A	B	X	Y	SELECT	START				Switch
B	A	Y	X	-	+	主页	截图		

连接安卓/iOS 设备



基本操作

开机: 按一下 键
关机: 切换背部档位 (或者无操作15分钟后,手柄会自动关机)
低电量: 指示灯红色闪烁
关机状态下充电: 指示灯红色常亮
关机状态下充满电: 指示灯绿色常亮

规格

模式	通用平台	指示灯	连接方式	系统要求
	PC	长按 O+X 切换到 XInput 模式,指示灯白色	USB 接收器/有线	Win 7 及以上
	PC/安卓/iOS	长按 O+A 切换到 DInput 模式,指示灯蓝色	蓝牙	Win 7 及以上 安卓 10 及以上 iOS 14 及以上
NS	Switch	蓝色	蓝牙/有线	Switch 平台

XInput 模式:适用于绝大多数原生支持手柄的游戏
DInput 模式:适用于原生支持手柄的模拟器游戏

无线射频: 蓝牙 5.0
使用距离: 小于10米
电池信息: 可充电锂离子电池,电池容量800mAh,充电时间2小时,充电电压5V,充电电流800mA
工作电流: 使用时电流小于45mA,待机时电流小于10μA
温度范围: 5℃ - 45℃ 下使用和存放

外观



常见问题

Q: 手柄无法连接?
A: 请确保手柄背部档位正确,同时按住 键三秒,指示灯快闪,手柄进入配对状态
- 配对接收器:接收器插入电脑USB口,用卡针顶一下接收器上的圆孔,完成配对
- 配对蓝牙:在蓝牙设置页面取消已配对设备,开关蓝牙,重新连接
Q: 如何升级手柄固件?
A: 在电脑上安装飞智空间站,或者在手机上安装飞智游戏厅,根据软件引导进行固件升级
Q: 摇杆/扳机/体感出现异常?
A: 在电脑上安装飞智空间站,进入测试页面,按引导校准手柄

产品中有害物质的名称及含量

部件名称	有害物质					
	铅 (Pb)	汞 (Hg)	镉 (Cd)	六价铬 (Cr(VI))	多溴联苯 (PBB)	多溴二苯醚 (PBDE)
印刷电路板组件	○	○	○	○	○	○
外壳	○	○	○	○	○	○
包装	○	○	○	○	○	○
线材	○	○	○	○	○	○
聚合物电池	○	○	○	○	○	○
硅胶	○	○	○	○	○	○
金属、胶带、等小结构件	○	○	○	○	○	○

本表格依据 SJ/T 11364 的规定编制

○ 表示该有害物质在该部件所有均质材料中的含量均在 GB/T 26572-2011 规定的限量要求以下
× 表示该有害物质至少在该部件的某一均质材料中的含量超出 GB/T 26572-2011 规定的限量要求

Flydigi Direwolf 2 Game Controller

User Manual



Scan QR code to read the user manual

Open Flydigi Space Station For More Customize Setting

Visit our official website www.flydigi.com to download "Flydigi Space Station". You can customize buttons, macros, motion sensing, joystick and other functions.

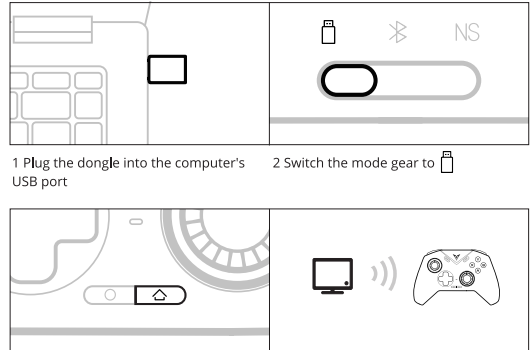
Flydigi Space Station	
<p>Button mapping</p> <p>Button can be mapped as the controller button, mouse and keyboard button</p>	<p>Macro definition</p> <p>You can set up Turbo, record joystick and button data, simplify tedious operation</p>
<p>Motion sensing mapping</p> <p>The motion can be mapped to a joystick/mouse, making shooting games more accurate</p>	<p>Joystick adjustment</p> <p>Set the dead zone and sensitivity curve</p>

Keybinding Turbo/ Marco

For Direwolf 2, turbo and marco functions can be set through key combinations. Please scan the QR code on the homepage for specific setup methods.

Connect With Computer

Wireless dongle connection



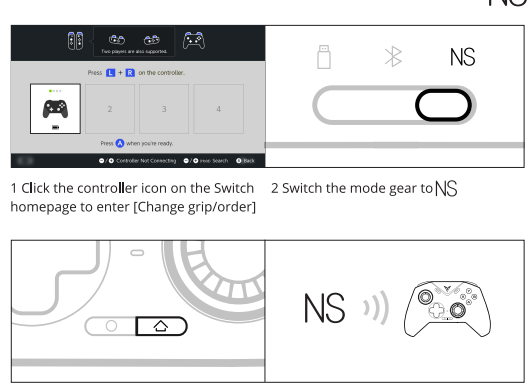
Wired connection

Connect the computer and the controller through the USB cable, and the indicator light keep in white, which indicate the connection is successful

BT connection

Switch the mode gear to , press the button to wake up the controller, and connect Xbox Wireless Controller in the computer's BT settings

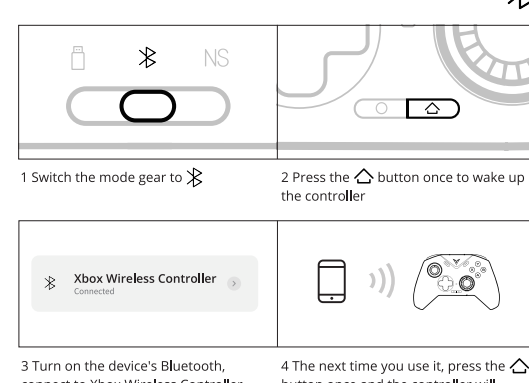
Connect to Switch



In Switch mode, the key and key-value mapping relationship is as follows

A	B	X	Y	SELECT	START				Switch
B	A	Y	X	-	+	Home	Screenshot		

Connect an Android/iOS device



Basic operations

Power on: Press the button once
Power off: Switch back gear; The controller will automatically turn off if inactive for 15 minutes.
Low Power: The indicator light flashes red
Charging when the power is off: the indicator light keeps in red
Fully charged when powered off: the indicator light keeps in green

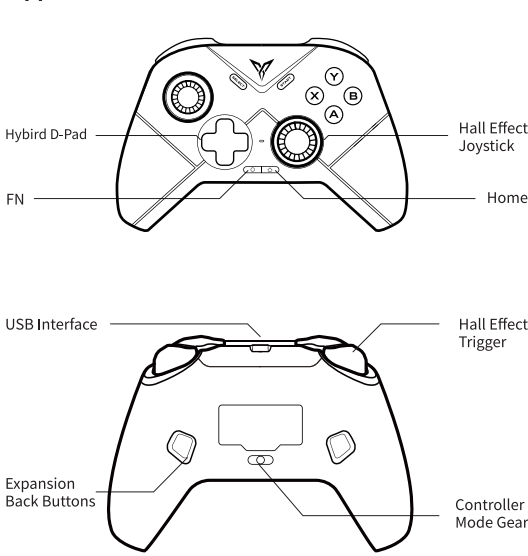
Specification

mode	Platforms	Indicator Light	Connection Type	System Requirements
	PC	Hold O+X to switch to Xinput mode, the indicator light turning white	Dongle/Wired	Win 7 and Above
	PC/Android/iOS	Hold O+X to switch to DInput mode, the indicator light turning blue	BT	Win 7 and Above Android 10 and Above iOS 14 and Above
NS	Switch	Blue	BT/Wired	Switch

Xinput mode: suitable for the majority of games that natively support controllers
DInput mode: For emulator games that natively support controllers

Wireless RF: BT 5.0
Service distance: less than 10 meters
Battery information: rechargeable lithium-ion battery, battery capacity 800mAh, charging time 2 hours, charging voltage 5V, charging current 800mA
Operating current: less than 45mA when in use, less than 10μA in standby
Temperature range: use and storage at 5℃ - 45℃

Appearance



Q & A

Q: Any delays or disconnections occurs when the dongle is connected to the computer
A: The issue is generally caused by signal interference. It is recommended to add a USB extension cable between the dongle and the computer. For more details, please consult customer service
Q: How to upgrade the controller firmware?
A: Install the Flydigi Space Station on computer, or install the Flydigi Game Hall on mobile phone, and upgrade the firmware according to the software boot
Q: Any abnormalities in the joystick/trigger/motion sensing?
A: Install the Flydigi Space Station on computer, enter the test page, adjust the controller under the guidance

The name and content of harmful substances in the product

Part Name	Toxic or Hazardous Substances and Elements					
	Pb	Hg	Cd	Cr	PBB	PBDE
PCB Board	○	○	○	○	○	○
Shell	○	○	○	○	○	○
Packaging	○	○	○	○	○	○
Wire	○	○	○	○	○	○
Polymer Battery	○	○	○	○	○	○
Silicone	○	○	○	○	○	○
Small structural parts such as metal and tape	○	○	○	○	○	○

This form has been prepared in accordance with the provisions of SJ/T 11364

○ Indicates that the content of the hazardous substance in all homogeneous materials of this part is within the limit specified in GB/T 26572-2011. Require the following
× Indicates that the content of the hazardous substance in at least one homogeneous material of the component exceeds the provisions of GB/T 26572-2011. The limited requirements

70g双胶纸双面打印